

www.levitagrano.com

Levita Granito LLP.

Pipli-Jetpar Road, Near Rangpar Village,
At. Jivapar - 363 630, Dist. Morbi (Guj.) India.

e-mail : sales@levitagrano.com,
export@levitagrano.com

cell : +91- 98796 99441, +91- 99786 99443



600x600mm
Double Charge Vitrified Tiles



Incredible **to**
uch



product' 2018



Levita Granito LLP is manufacturer of Double Charge Vitrified tiles in India. It has an annual capacity of 5 mn. sq. meters in a plant located near Morbi in Gujarat

Our motivating factor is to be the best and do the best for our customers located across the world. Our plants have state of art technology machineries which support us to perform the best. Since its inception Levita Quality control department is very conscious for giving zero defect and zero tolerance in quality hence we have continuous and indomitable efforts in research and development of our products.

Since its foundation we became synonyms of best customer service and the best quality. Professionally managed team for production with hard work and motivation provides optimized solutions to the market requirements.

Our Tiles are available in a wide range of colours and textures used in airports, shopping malls, corporate houses, homes, offices etc. With an unparalleled commitment towards quality we have strived to adopt technologies and standards with the changing times. We believe that it is our team work which will reach us on the apex of success in this ceramic industry.



Incredible
touch

600x600mm
Double Charge Vitrified Tiles



www.levitagranito.com



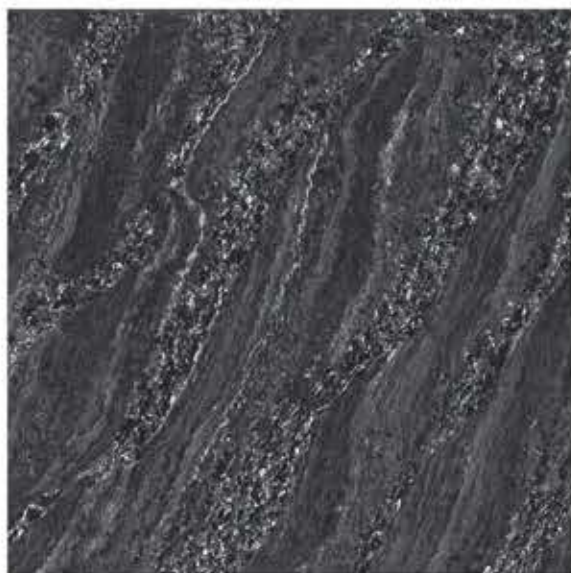
ONXY WHITE



ONXY GOLD



ASTER ICE



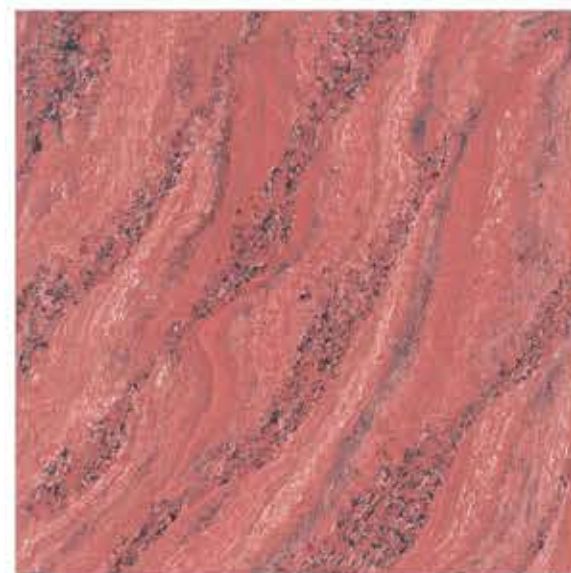
ASTER BLACK



ASTER BROWN



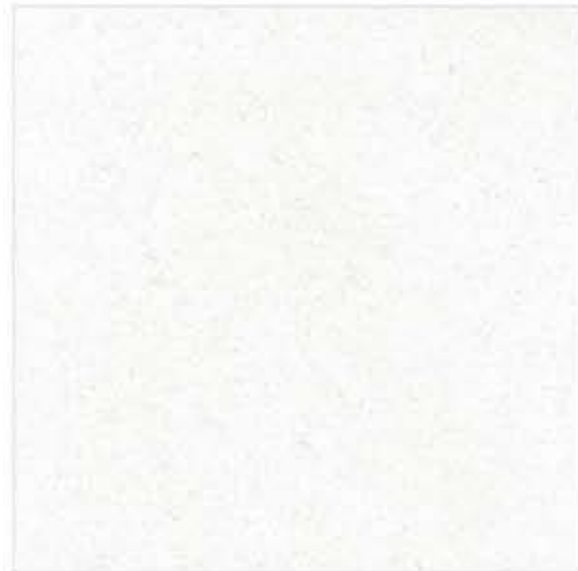
ASTER SLATE



ASTER RED



600x600mm | DOUBLE CHARGE VITRIFIED TILES



ULTRA WHITE



ULTRA CREMA WHITE



ULTRA GREEN



ULTRA GOLD



600x600mm | DOUBLE CHARGE VITRIFIED TILES



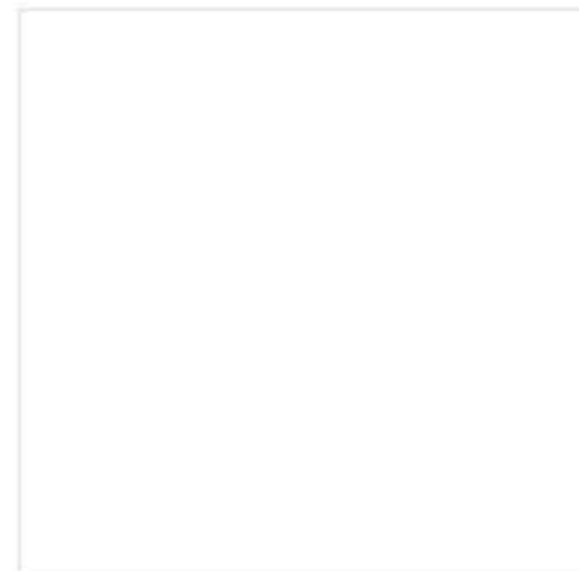
ULTRA BEIGE



ULTRA PISTA



ULTRA PINK



PEARL WHITE



AQUA GREY



AQUA BROWN



AQUA ASH



AQUA LAVA



AQUA MARBLE



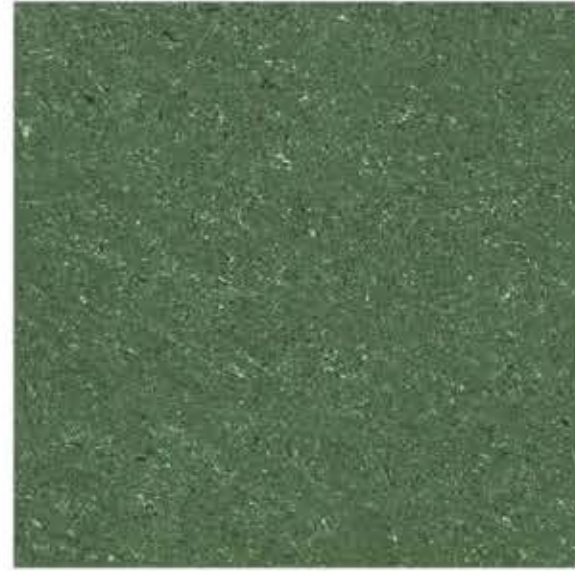
AQUA MAJESTIC



AQUA ALMOND



AQUA BRONZE



AQUA GREEN



AQUA BLACK



AQUA CHOCO

technical specification

TECHNICAL PARAMETERS	ASTM	CEN	ISO	INT. STD	LEVITA GRANITO
Deviation in length/width	C 499	EN 98	10545-2	± 0.6%	± 0.1%
Deviation in Thickness	C 499	EN 98	10545-2	± 0.5%	± 0.1%
Straightness of side	-	EN 98	10545-2	± 0.5%	± 0.1%
Rectangularity	-	EN 98	10545-2	± 0.6%	± 0.2%
Surface flatness	C 485	EN 98	10545-2	± 0.5%	± 0.2%
Water absorption	C 373	EN 99	10545-3	< 0.5%	< 0.05%
Scratch hardness (Moh' s)	C 849	EN 101	-	> 6	> 8
Modulus fo Rupture (N/mm ²)	C 648	EN 100	10545-4	> 27 N/mm ²	> 47 N/mm ²
Breaking Strength (N)	C 648	-	-	1113 N	2830 N
Skid Resistance	C 1028	-	DIN51130	> 0.4	> 0.6
Abrasion resistance (N/mm ²)	-	EN 102	10545-6	< 204 N/mm ²	< 144 N/mm ²
Linear thermal expansion (/°C)	C 372	EN 103	10545-8	< 9x10 ⁻⁶ N/mm ²	< 6x10 ⁻⁶ N/mm ²
Thermal shock resistance	C 484	EN 104	10545-9	No Damage	No Damage
Colour resistance to light	DIN 51094	-	10545-16	No Damage	No Damage
Glossiness (Reflection)	-	-	-	-	90 %
Chemical resistance (Except HF)	C 650	EN 106	10545-13	No Damage	No Damage
Density (gm/cc)	-	-	DIN51082	> 2	2.4
Frost resistance	-	-	10545-12	Frost Proof	Frost Proof
Decorative Faults	-	-	10545-2	Defect Free	Defect Free
Surface Quality	-	-	10545-2	95 % Defect Free	> 95%
Impact Resistance	-	-	-	Good	Good
Crazing Resistance	-	-	10545-11	No Crazing	No Crazing
Resistance to house hold chemicals	-	-	10545-13	No visible effect	No visible effect

packing details

Size	Thickness	No. of Tiles / Box	Coverage Area	Wt. of Box
600x600mm	9.0mm (Approx)	4 Pcs.	1.44 Sq.Mtr.	28.00 Kg. (Approx)